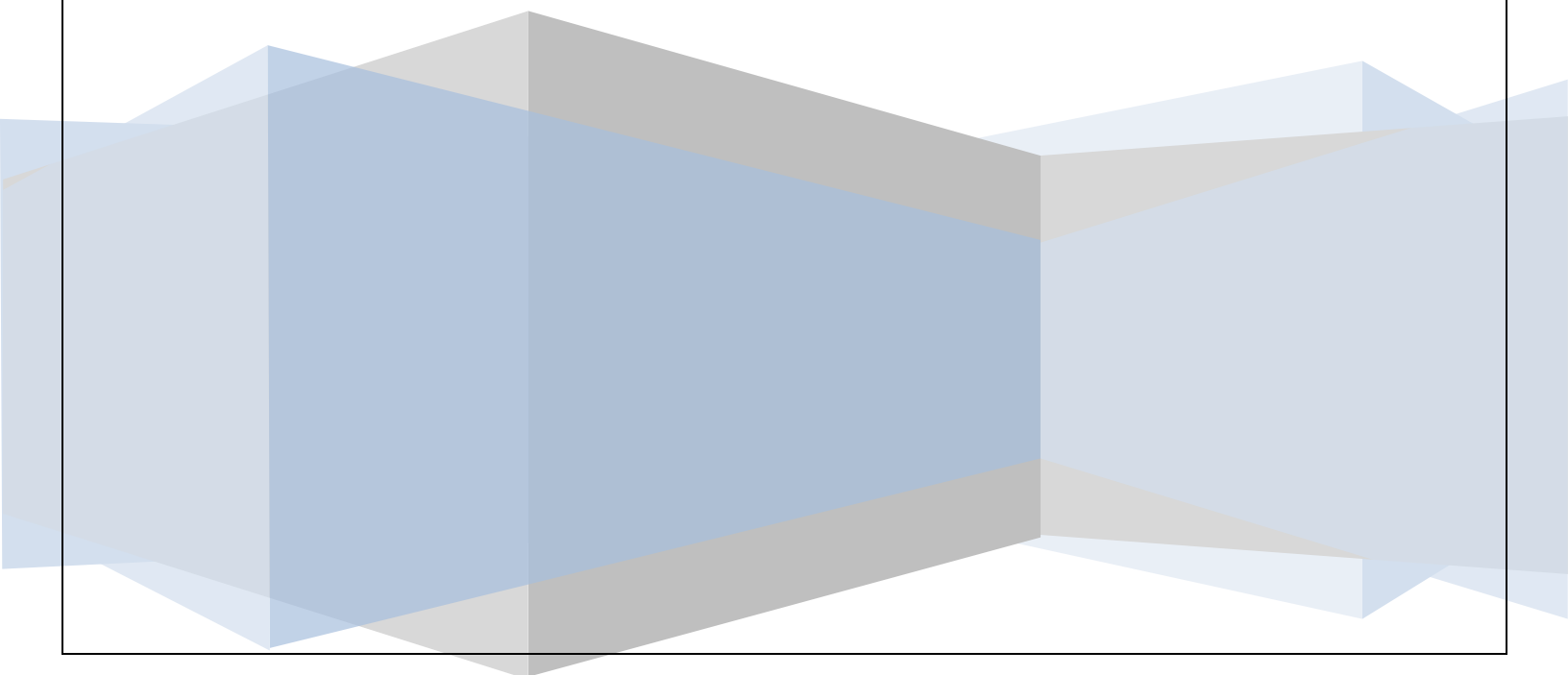


USER MANUAL



INTELLECTUAL
PROPERTY **INDIA**
PATENTS | DESIGNS | TRADE MARKS
GEOGRAPHICAL INDICATIONS



User Manual
Digital Signature Certificate(DSC)
(Controller General of Patents,
Designs & Trademarks)

INDEX

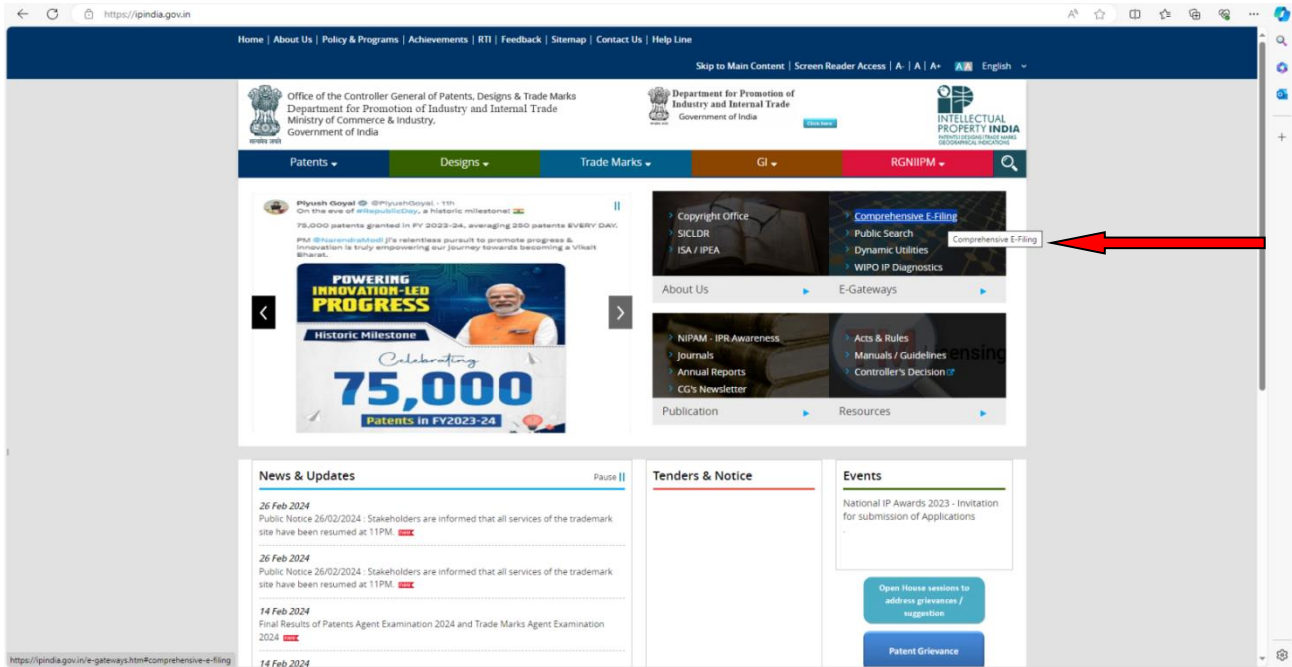
S.No.	CONTEXT	Page No.
1.	DSC Manual For Windows 10 & Above.	4 - 14
2.	DSC Manual For Windows 7, 8.1.	15 - 18

1.DSC MANUAL FOR WINDOWS 10 & Above.

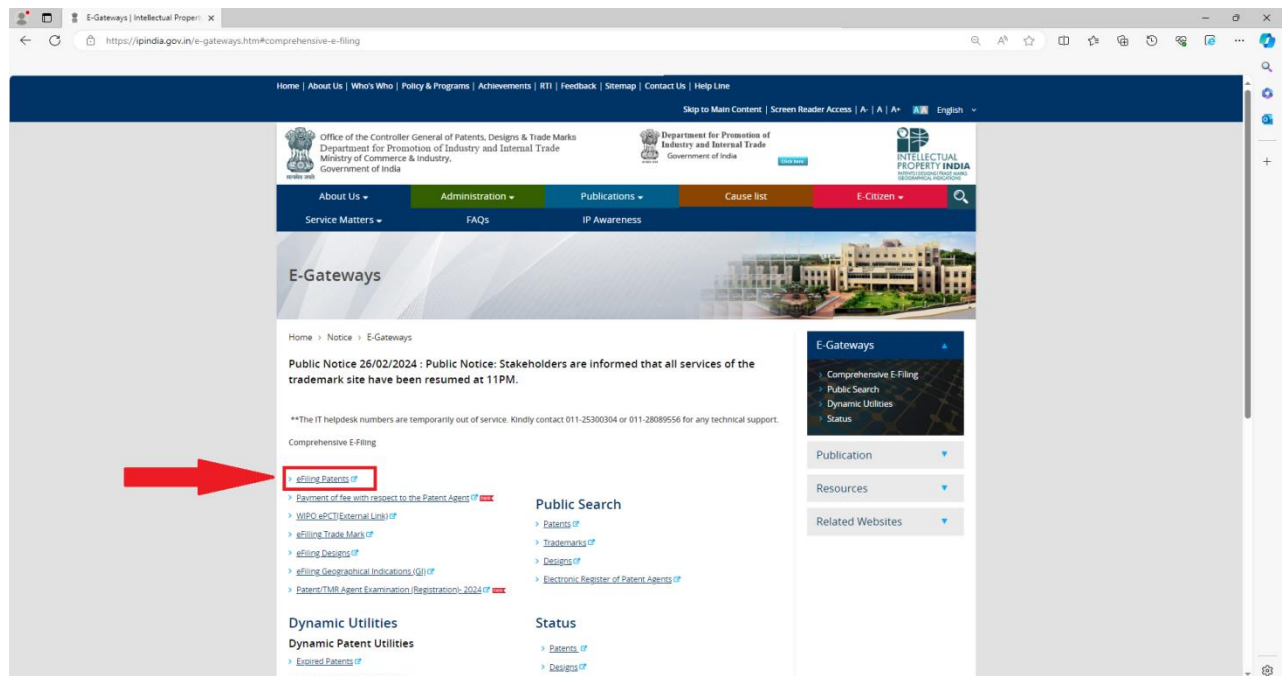
DSC USER Manual For e-filing of Patent Application

Note : Use Microsoft Edge Browser in Internet Explorer Mode to register or sign in with Digital Signature (DSC).

→Go to Official Website '**ipindia.gov.in**' → **Comprehensive E-filing**



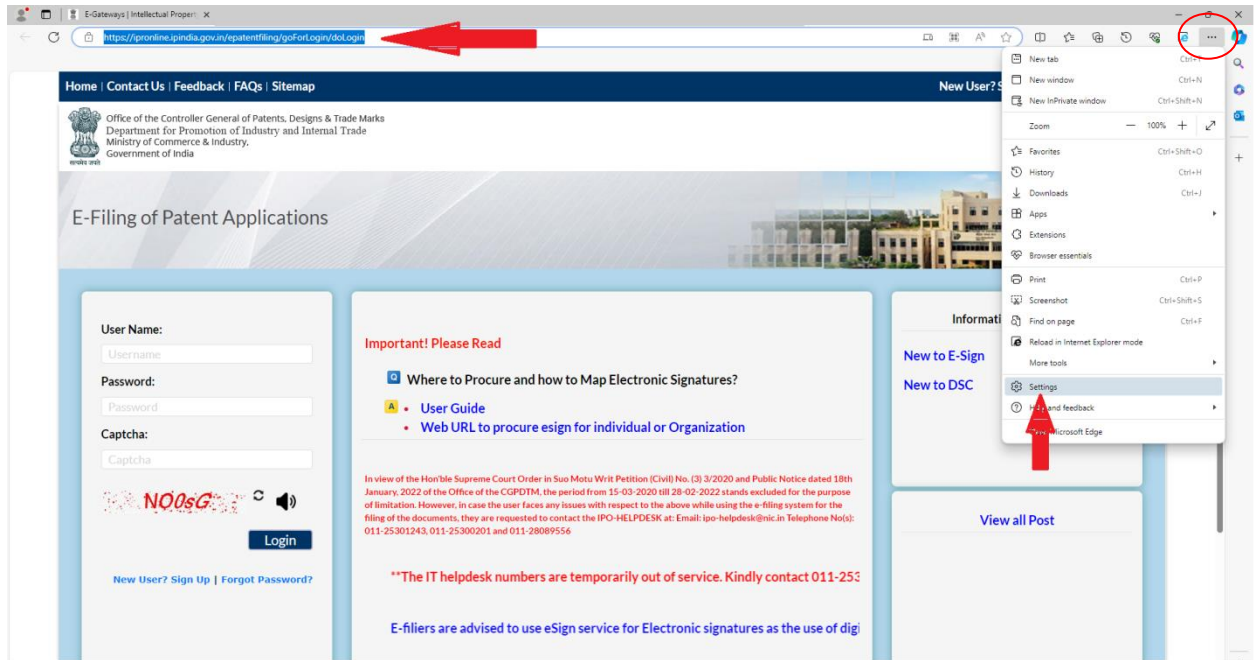
→click '**e - filling Designs**' → **Login Page Open**



→How to Reload Page in Internet Explorer Mode Before Login←

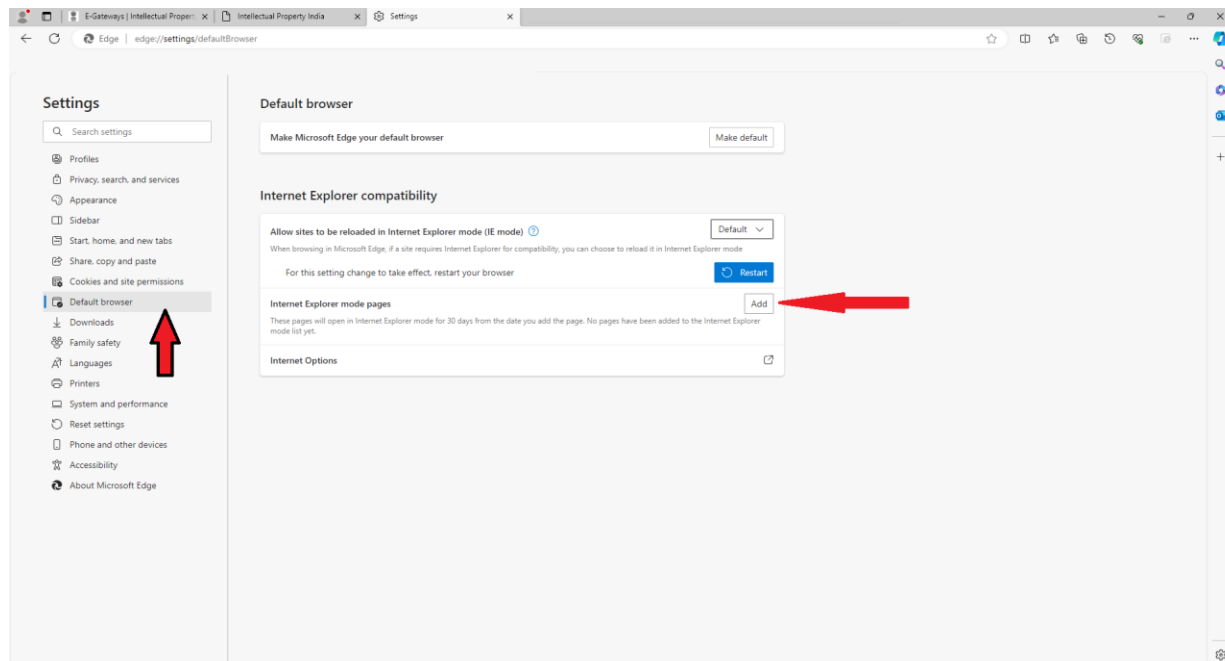
Note: Steps to open '*Internet Explore Mode*' in Microsoft Edge Browser.

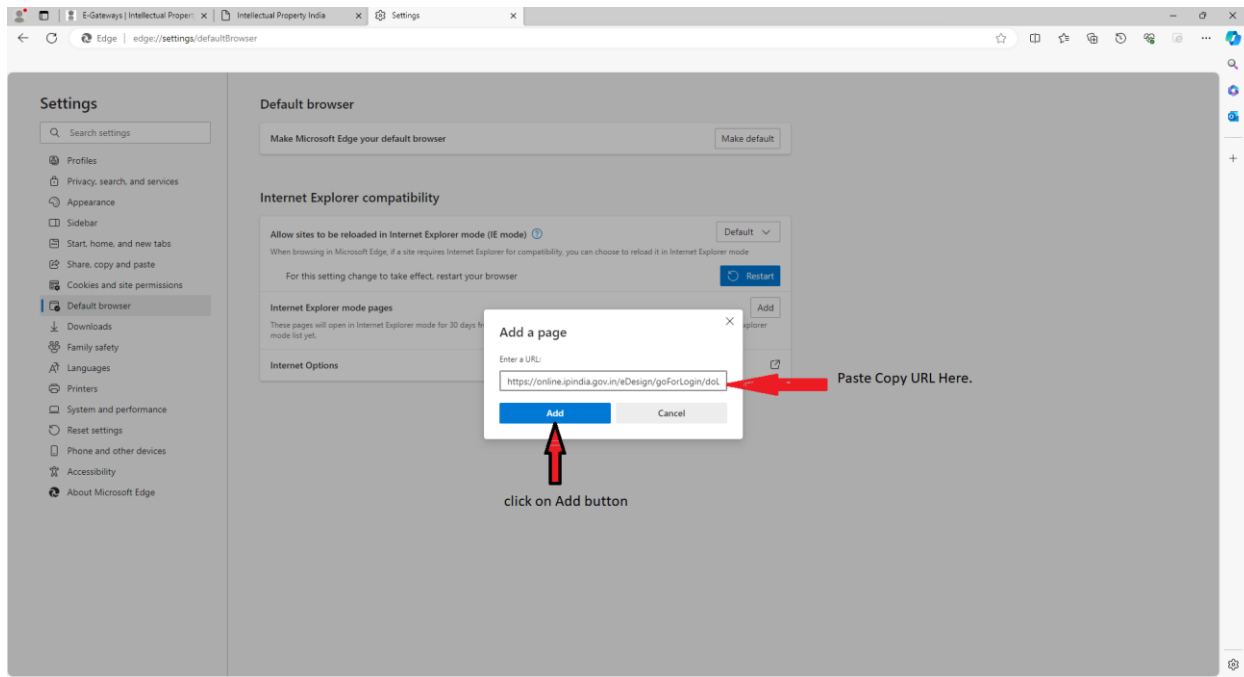
- Copy website URL → Locate 3 dots(...) on Top Right corner of Browser → Go to Settings.



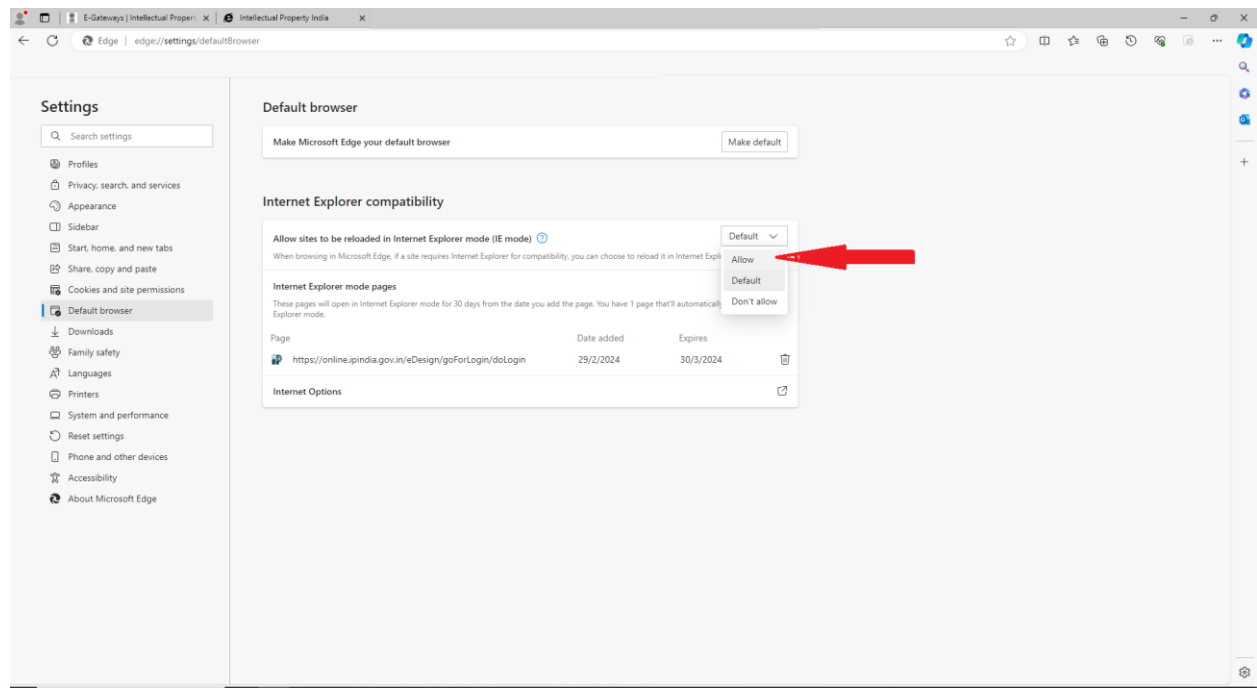
→ Locate 'Default Browser' on Left Menu bar → click on 'Add' button Inside "Internet Explorer Compatibility".

→ Paste URL That You Copy from URL Bar of Login Page in 'Add a Page' section below.



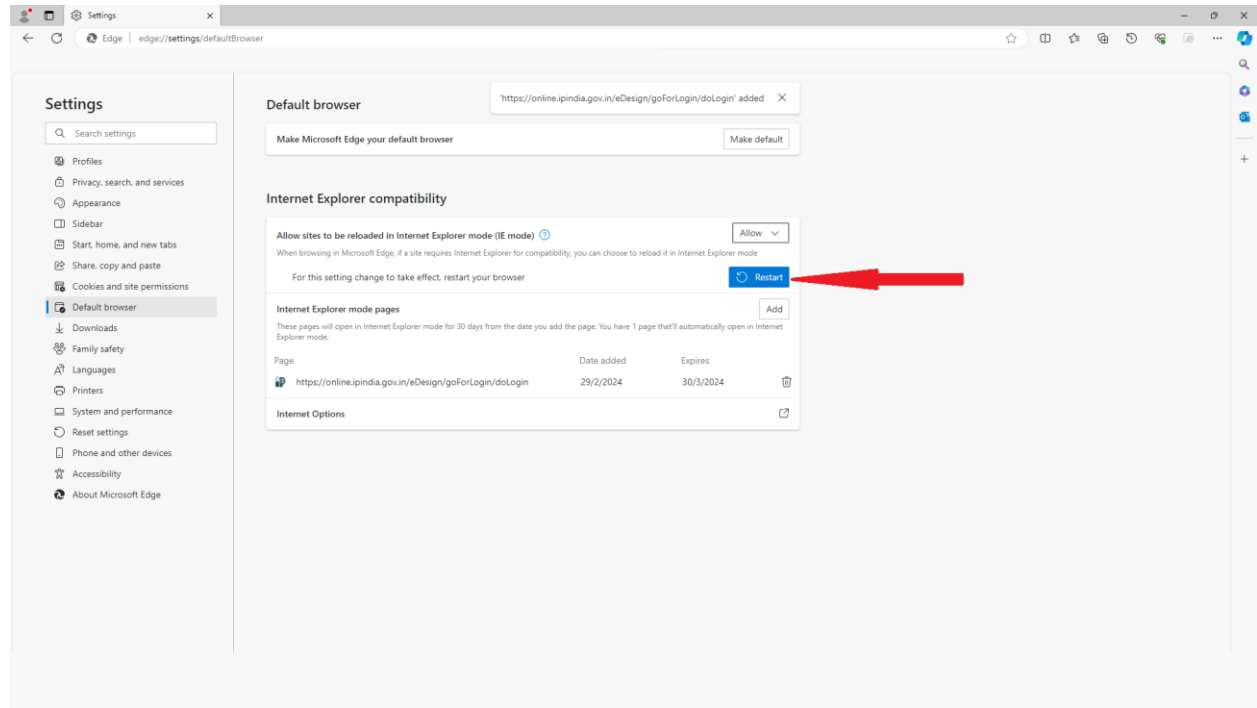


➔ click on 'Add' button.

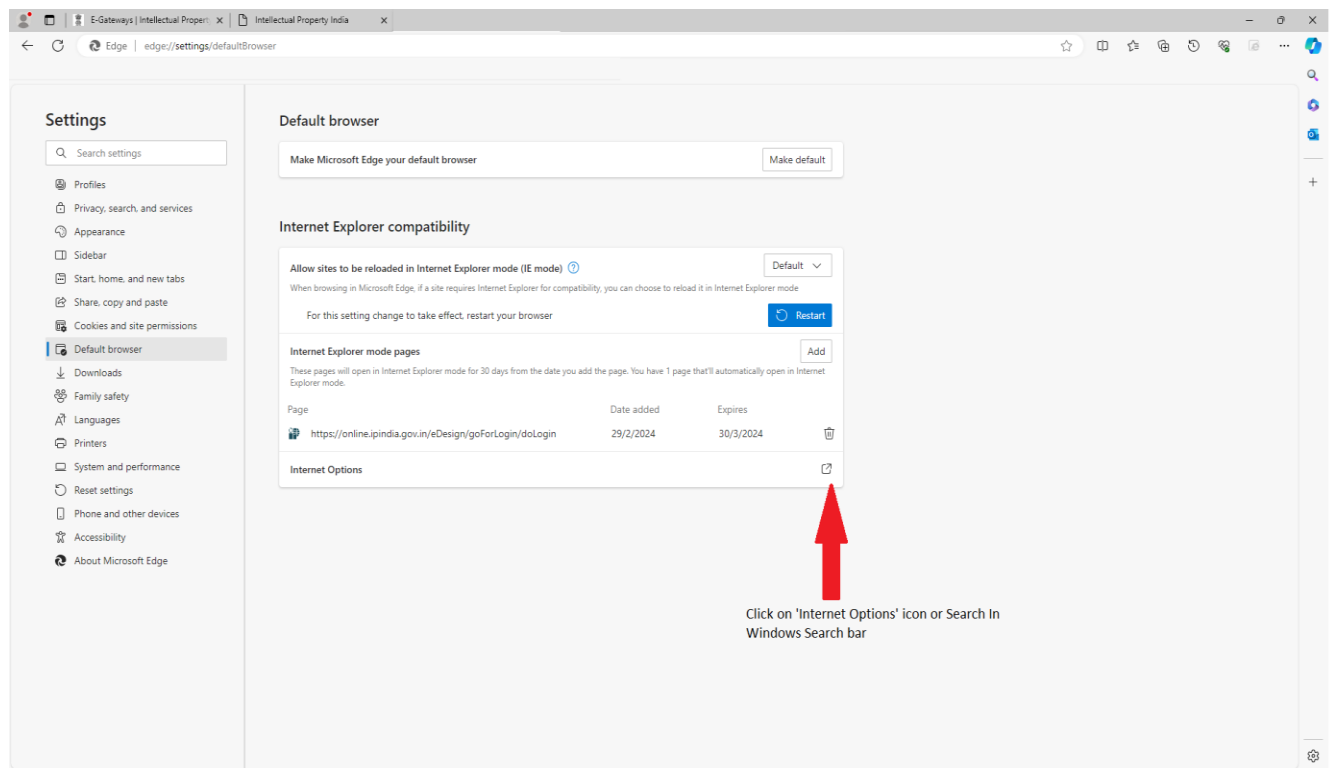


➔ Select 'Allow' from Dropdown menu ➔ and 'Restart' your Browser.

➔ Click on **'Restart'** button to Restart your Browser After Adding URL.



➔ Now Again Go to **'Setting' → "Default Browser" → Go to "Internet Options."**

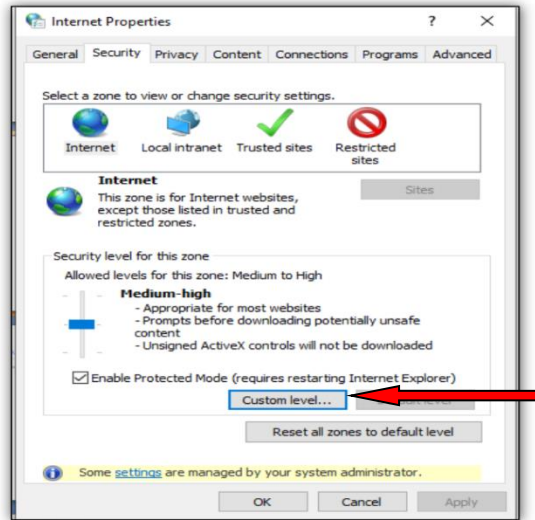


➔ **Click on 'Internet Options' icon .**

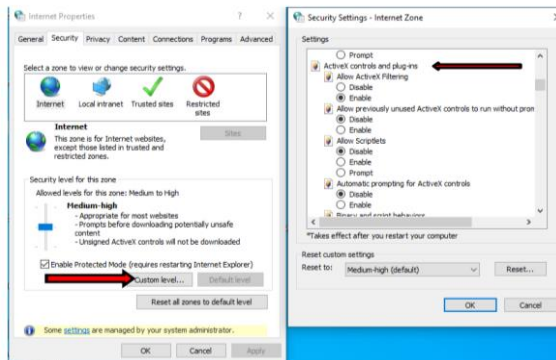
➔ **Now Click on "Internet Options" Below on same Location 'Default Browser' 'OR' You can search for Internet Options in Windows Search bar.**

8. Go to Internet Options [Press **window icon** –**search-** **internet option**] in your Computer/laptop

9. Choose **Security icon** – then select **Internet-** then go to **custom level**

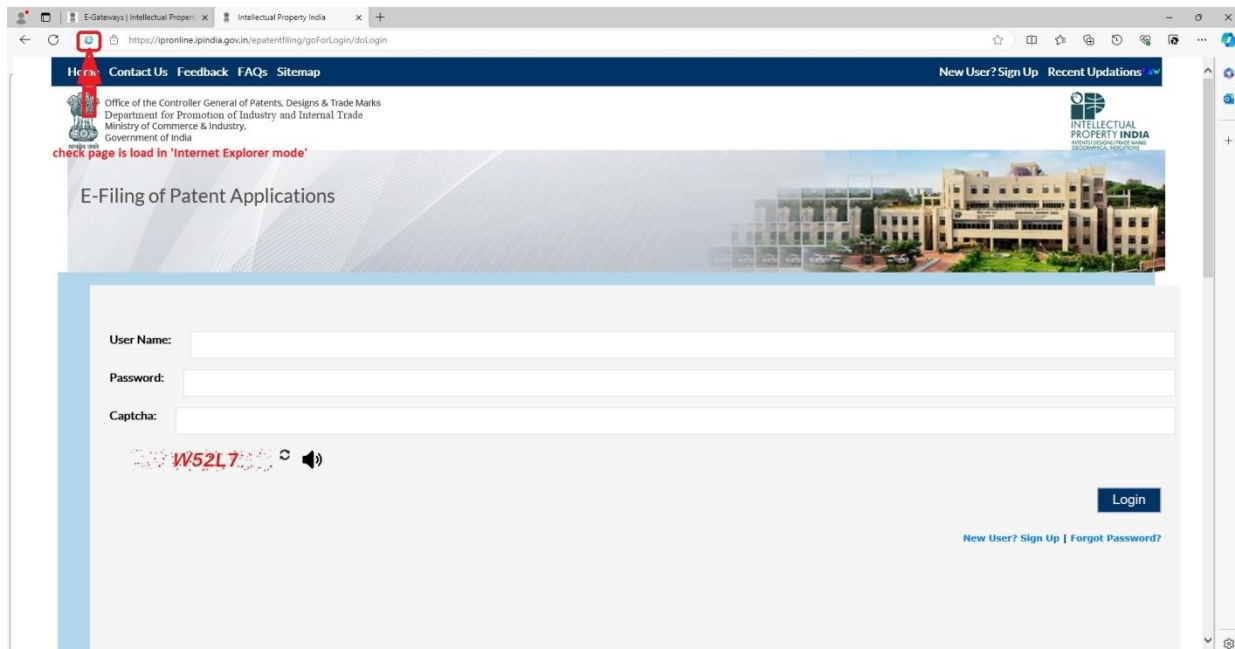


Change the setting as per below table in settings

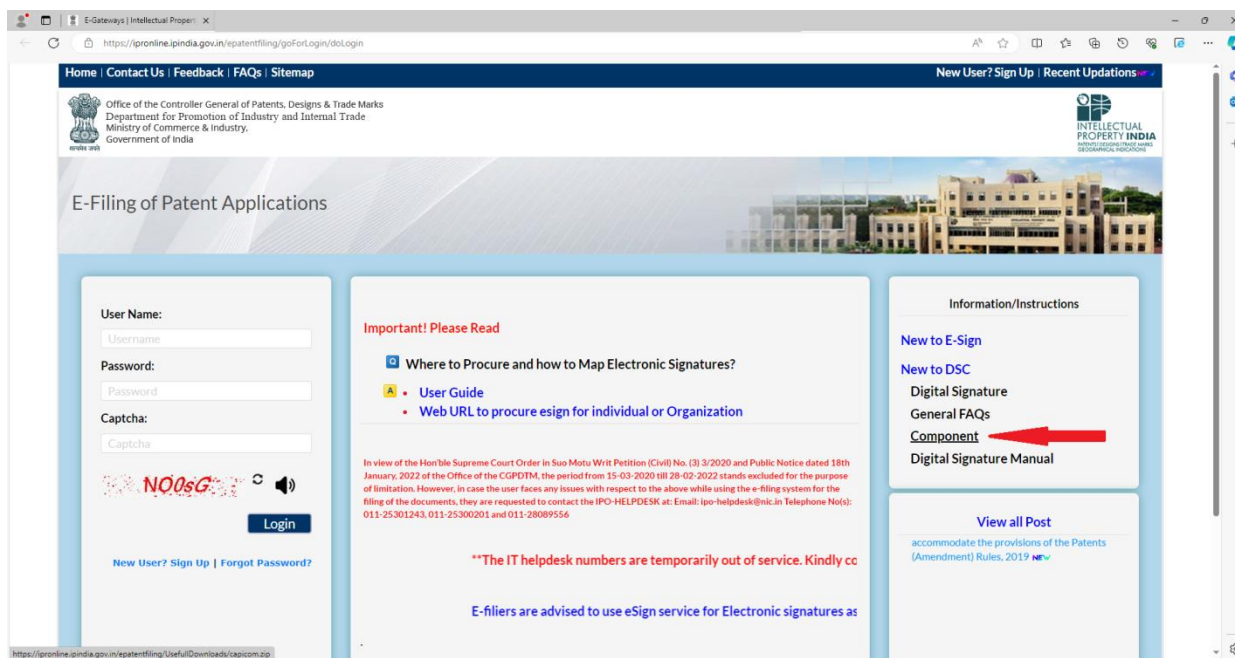


Settings	En ab le	Disa ble	Pro mpt
Allow previously unused ActiveX controls to run without prompt	Y		
Allow Scriptlets	Y		
Automatic prompting of ActiveX controls	Y		
Run ActiveX controls and plug-ins Script ActiveX controls marked safe for scripting	Y		
Miscellaneous-Display Mixed content		Y	

→ Check Page is Loaded in 'Internet Explorer mode' before Login.



→ HOW TO DOWNLOAD Component → capicom.dll → Look below 'Component(capicom.dll)'



Steps: To Configure Component (capicom.dll)

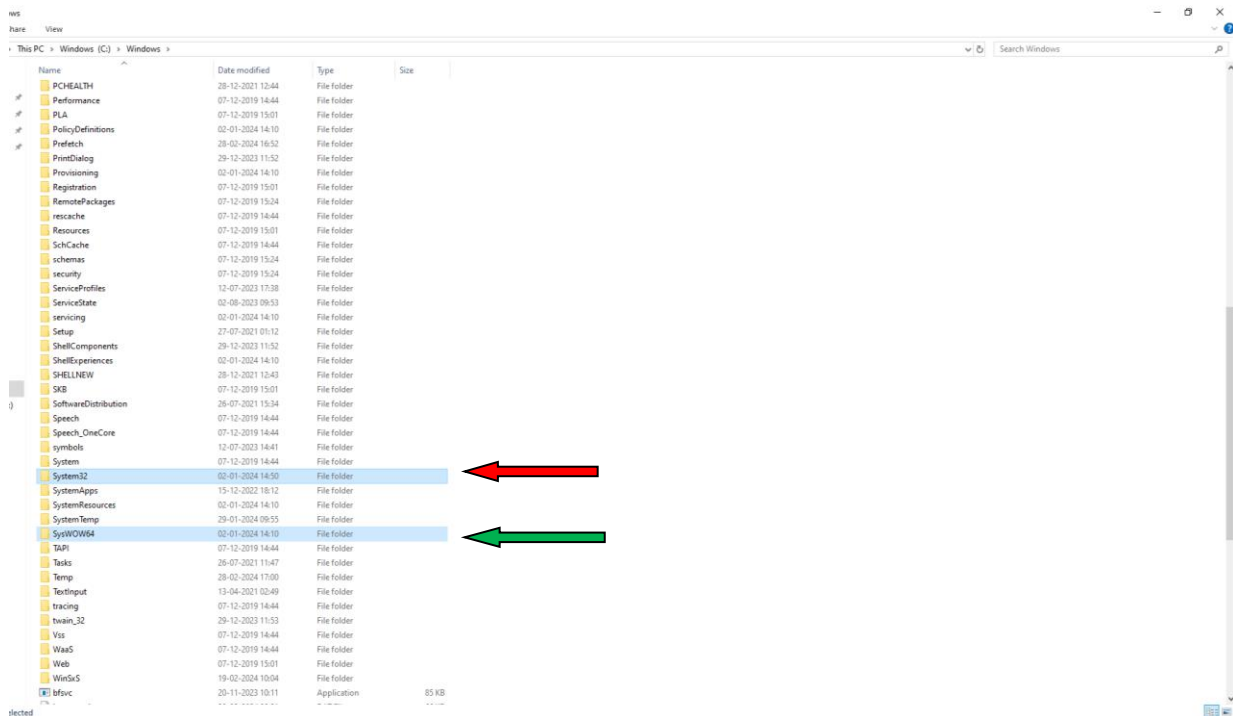
- First Download ‘capicom.dll’ component
- Go to Your Download Folder and Extract the downloaded ‘.rar’/’.zip’ file
- **Right** → Extract to “capicom” → open Extracted folder copy “capicom.dll” file .
- Go To your Operating system(OS) drive where your OS is install most commonly it is install in “C:|” Drive.
- **Steps:** First you have to check which bit operating system you are using for that just open your This Pc or My computer from Desktop icon and Right Click on Properties find System Type and see if it is 64-bit or 32-bit (32-bit written as x86).

--For 64-bit Operating System--

Step 1-Go to your ‘C:|’ drive windows → find ‘SysWoW64’ folder.

(**Note:** for 64-bit - OS paste in SysWow64 folder & for 32-bit OS – paste in System32 folder).

Step2: Paste Extract “capicom.dll” File inside SysWoW64 folder



This PC > Windows (C:) > Windows > SysWOW64

Name	Date modified	Type	Size
C_G18030.DLL	20-11-2023 10:15	Application exten...	220 KB
c_GSM7.DLL	20-11-2023 10:15	Application exten...	12 KB
C_IS2022.DLL	20-11-2023 10:15	Application exten...	14 KB
C_ISCI.DLL	07-12-2019 14:40	Application exten...	12 KB
cabapi.dll	07-12-2019 14:39	Application exten...	75 KB
cabapi.dll	20-11-2023 10:15	Application exten...	118 KB
cabview.dll	07-12-2019 14:39	Application exten...	148 KB
calc	07-12-2019 14:40	Application	27 KB
calc	07-12-2019 14:40	Application	26 KB
CallButtons.dll	20-11-2023 10:15	Application exten...	65 KB
CallButtons.ProxyStub.dll	07-12-2019 14:39	Application exten...	18 KB
CallHistoryClient.dll	20-11-2023 10:15	Application exten...	141 KB
CameraCaptureUI.dll	20-11-2023 10:15	Application exten...	92 KB
CameraSettingsUI.Host	20-11-2023 10:17	Application	29 KB
CapabilityAccessManagerClient.dll	20-11-2023 10:15	Application exten...	162 KB
capauthz.dll	20-11-2023 10:15	Application exten...	248 KB
capicom.dll	06-10-2016 17:57	Application exten...	500 KB
capiprovider.dll	20-11-2023 10:16	Application exten...	52 KB
capisp.dll	07-12-2019 14:39	Application exten...	21 KB
CastingShellExt.dll	20-11-2023 10:17	Application exten...	86 KB
catsrv.dll	20-11-2023 10:15	Application exten...	375 KB
catsrvps.dll	07-12-2019 14:39	Application exten...	23 KB
catvnu.dll	20-11-2023 10:15	Application exten...	398 KB
ccs.dll	07-12-2019 14:40	Application exten...	69 KB
cdosys.dll	20-11-2023 10:16	Application exten...	813 KB
cdp.dll	20-11-2023 10:18	Application exten...	4,341 KB
cdprt.dll	20-11-2023 10:15	Application exten...	1,343 KB
cemapi.dll	20-11-2023 10:15	Application exten...	198 KB
cerors	07-12-2019 14:39	RS File	34 KB
certca.dll	20-11-2023 10:15	Application exten...	639 KB
certcli.dll	20-11-2023 10:15	Application exten...	347 KB
certCredProvider.dll	07-12-2019 14:39	Application exten...	37 KB
certenc.dll	20-11-2023 10:16	Application exten...	53 KB
CertEnroll.dll	20-11-2023 10:15	Application exten...	2,797 KB
CertEnroll.Crt	20-11-2023 10:15	Application	50 KB
CertEnrollUI.dll	07-12-2019 14:40	Application exten...	289 KB
certim	07-12-2019 14:40	Microsoft Comm...	62 KB
certmgr.dll	20-11-2023 10:16	Application exten...	1,912 KB
certmgr	20-11-2023 10:16	Microsoft Comm...	62 KB
CertPKCmdlet.dll	20-11-2023 10:16	Application exten...	54 KB
CertProvEng.dll	20-11-2023 10:15	Application exten...	134 KB
certreq	20-11-2023 10:16	Application	449 KB
certutil	20-11-2023 10:16	Application	1,266 KB

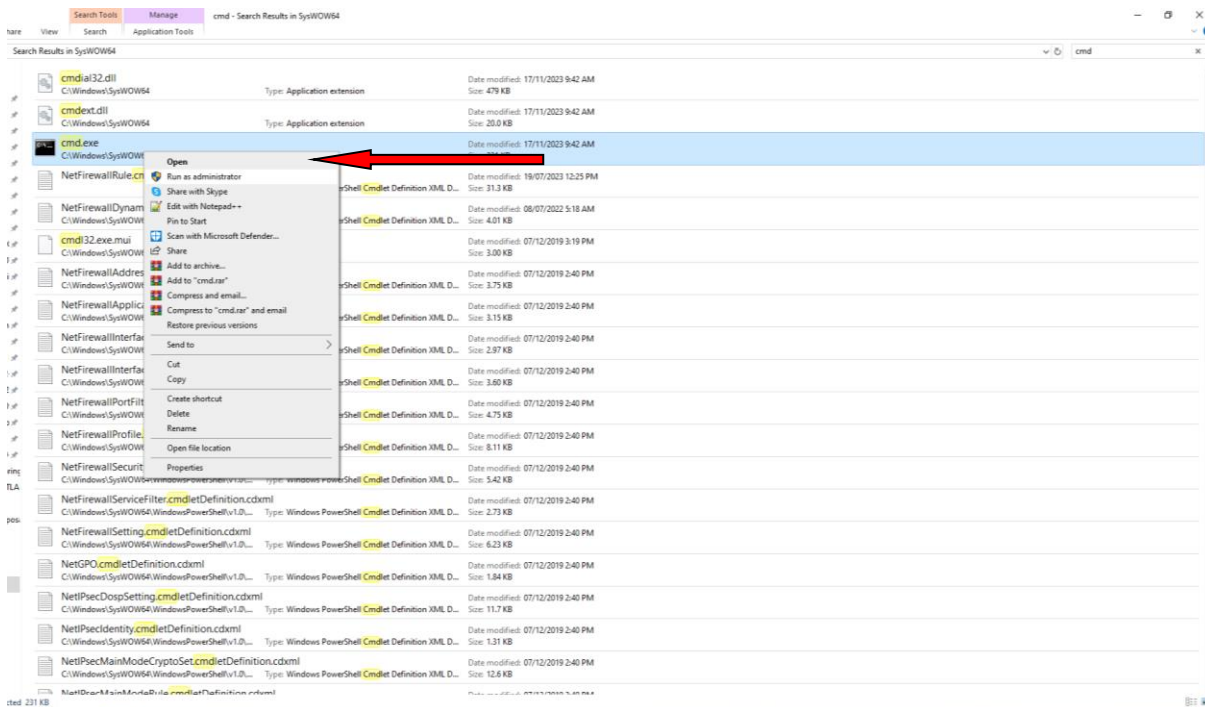
ected 499 KB

Step 3 - Search 'cmd' on same folder .

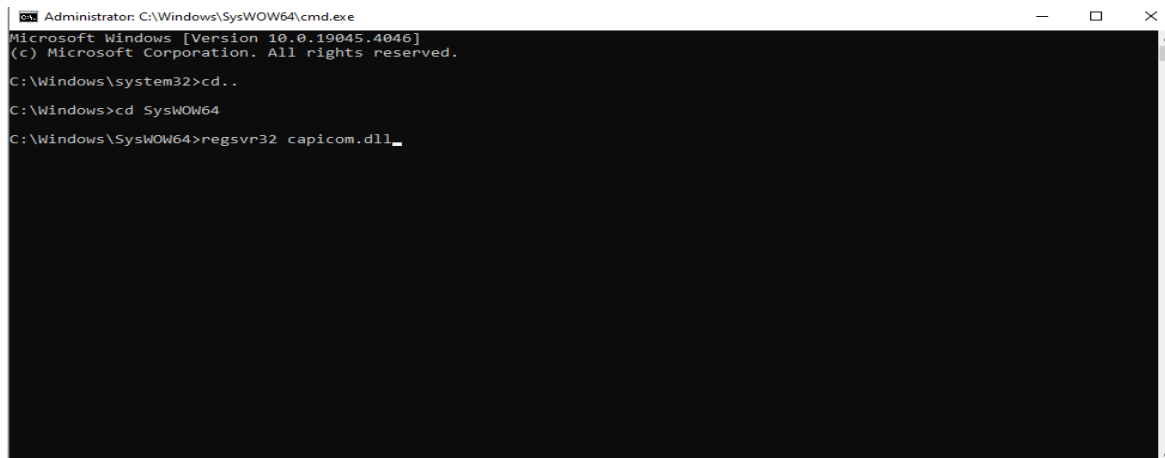
Search Tools cmd - Search Results in SysWOW64

Name	Type	Date modified	Size
cmdial32.dll	Application extension	17/11/2023 9:42 AM	479 KB
cmdext.dll	Application extension	17/11/2023 9:42 AM	20.0 KB
cmd.exe	Application	17/11/2023 9:42 AM	231 KB
NetFirewallRule.cmdletDefinition.cdxml	Windows PowerShell Cmdlet Definition XML D...	19/07/2023 12:25 PM	31.3 KB
NetFirewallDynamicKeywordAddress.cmdletDefinition.cdxml	Windows PowerShell Cmdlet Definition XML D...	08/07/2022 5:18 AM	4.01 KB
cmd32.exe.mui	MUI File	07/12/2019 3:19 PM	3.00 KB
NetFirewallAddressFilter.cmdletDefinition.cdxml	Windows PowerShell Cmdlet Definition XML D...	07/12/2019 2:40 PM	3.75 KB
NetFirewallApplicationFilter.cmdletDefinition.cdxml	Windows PowerShell Cmdlet Definition XML D...	07/12/2019 2:40 PM	3.15 KB
NetFirewallInterfaceFilter.cmdletDefinition.cdxml	Windows PowerShell Cmdlet Definition XML D...	07/12/2019 2:40 PM	2.97 KB
NetFirewallInterfaceTypeFilter.cmdletDefinition.cdxml	Windows PowerShell Cmdlet Definition XML D...	07/12/2019 2:40 PM	3.60 KB
NetFirewallPortFilter.cmdletDefinition.cdxml	Windows PowerShell Cmdlet Definition XML D...	07/12/2019 2:40 PM	4.75 KB
NetFirewallProfile.cmdletDefinition.cdxml	Windows PowerShell Cmdlet Definition XML D...	07/12/2019 2:40 PM	8.11 KB
NetFirewallSecurityFilter.cmdletDefinition.cdxml	Windows PowerShell Cmdlet Definition XML D...	07/12/2019 2:40 PM	5.42 KB
NetFirewallServiceFilter.cmdletDefinition.cdxml	Windows PowerShell Cmdlet Definition XML D...	07/12/2019 2:40 PM	2.73 KB
NetFirewallSetting.cmdletDefinition.cdxml	Windows PowerShell Cmdlet Definition XML D...	07/12/2019 2:40 PM	6.23 KB
NetGPO.cmdletDefinition.cdxml	Windows PowerShell Cmdlet Definition XML D...	07/12/2019 2:40 PM	1.84 KB
NetIPsecDospSetting.cmdletDefinition.cdxml	Windows PowerShell Cmdlet Definition XML D...	07/12/2019 2:40 PM	11.7 KB
NetIPsecIdentity.cmdletDefinition.cdxml	Windows PowerShell Cmdlet Definition XML D...	07/12/2019 2:40 PM	1.31 KB
NetIPsecMainModeCryptoSet.cmdletDefinition.cdxml	Windows PowerShell Cmdlet Definition XML D...	07/12/2019 2:40 PM	12.6 KB

Step 4: Right click "Run as Administrator" Enter Below Command.



--Follow below steps Commands:--



If you are in System32 then type:

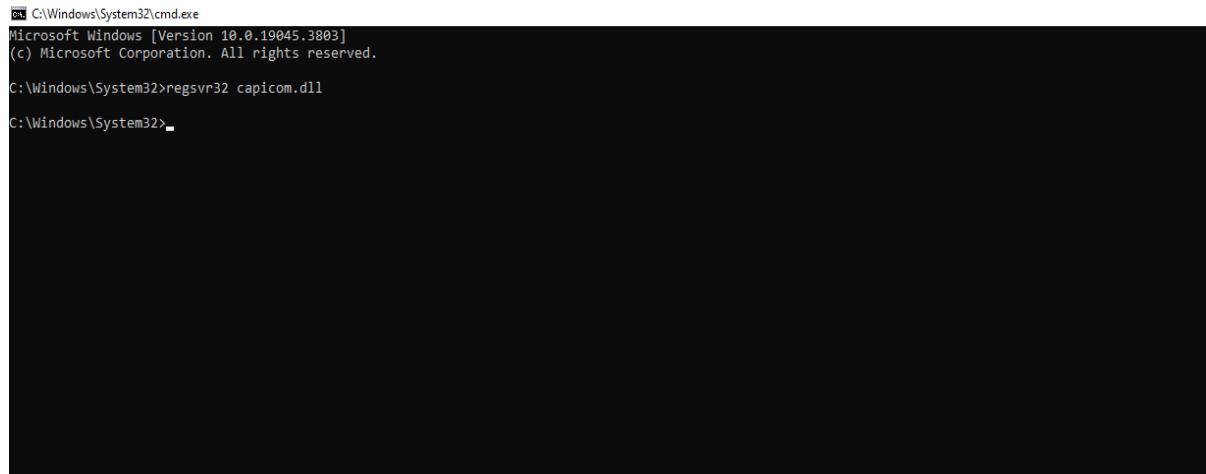
1. **cd.. → Press Enter → cd syswow64 → Press Enter → regsvr32 capicom.dll → Press Enter → Success Message Appear click on OK.**

--For 32-bit Operating System.--

Find 'cmd' on same folder → Right click open "Run as Administrator" Enter Below Command.

C:\ drive → C:\Windows\System32 > 'regsvr32 capicom.dll' → Hit Enter

→ Success message appear click on ok.



```
CA C:\Windows\System32\cmd.exe
Microsoft Windows [Version 10.0.19045.3803]
(c) Microsoft Corporation. All rights reserved.

C:\Windows\System32>regsvr32 capicom.dll

C:\Windows\System32>_
```

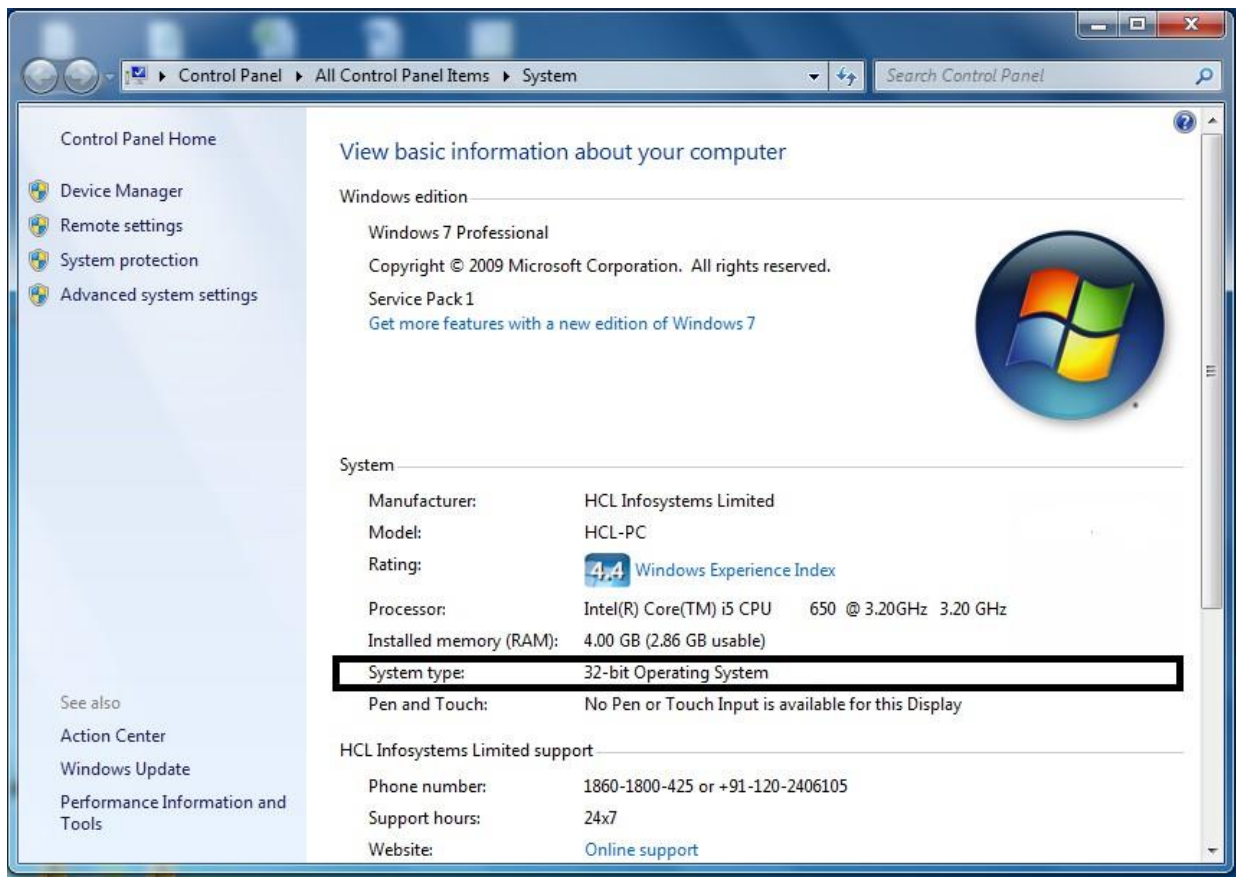
2.DSC MANUAL FOR WINDOWS 7 & 8.1

STEPS TO INSTALL CAPICOM.DLL

The Installation of or registration of capicom.dll varies according to the Windows bit version like 32bit version or 64 bit.

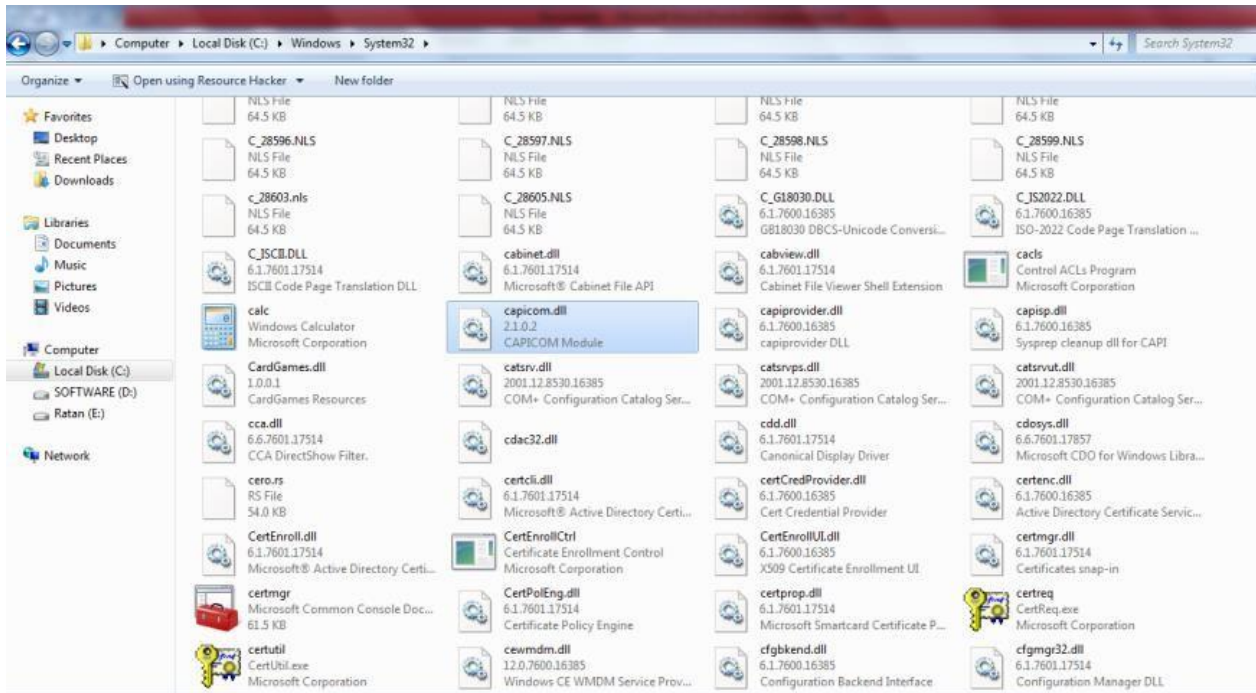
- ✓ **For Windows XP, Windows7 or Windows8 (32bit)**
- ✓ **For Windows7 or Windows8 (64bit)**

To see windows bit version right click on My Computer and choose property, given below screen show Windows bit version

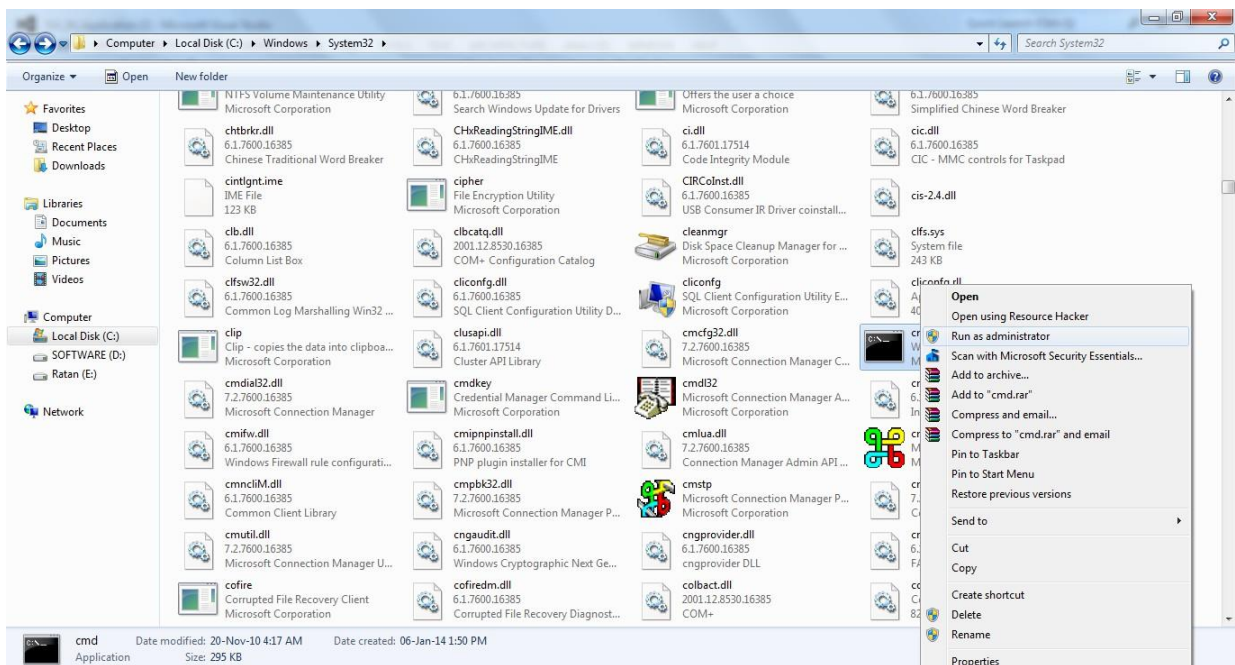


✓ **For Windows XP, Windows7 or Windows 8 (32bit)**

- Go to MyComputer/LocalDisc(C:)/Windows/ System32
- Copy *capicom.dll* to My Computer/ LocalDisc (C:)/ Windows/ System32



- Search *cmd* file
- Right click on *cmd* and open in Administrator Mode



- Type command *regsvr32capicom.dll*
- On clicking Enter button, the successful installation message displays.

✓ **For Windows7 or Windows8 (64bit)**

- Click on windows Start button
- Type “%systemroot%\SysWoW64\” in the search textbox to open system folder
- Copy the corresponding capicom.dll to following folder “%systemroot%\SysWoW64\”
- Open the *cmd* prompt in administrator mode
- Go to folder “%systemroot%\SysWoW64” from *cmd* prompt
- Run command “*regsvr32capicom.dll*”
- On clicking the ‘Enter’ button, the successful installation message displays.

✓ **IE Settings**

Settings	Enable	Disable	Prompt
Allow previously unused ActiveX controls to run Without prompt	Y		
Allow Scriptlets	Y		
Automatic prompting of ActiveX controls	Y		
Run ActiveX controls and plug-ins	Y		
Script ActiveX controls marked safe for scripting	Y		